

Kenwood Crescent

**INGLEBY
HOMES**
SALES & LETTINGS



Large, three storey, six bedroom property
Impressive, generous and flexible living space
Large westerly garden, double width drive, and garage
Attractive and well presented throughout
Six bedrooms, two ensuite

£299,950



Multi-Award Wining

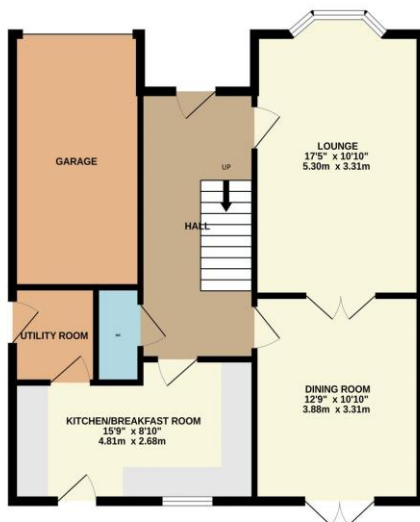


Delivering impressively spacious accommodation over three levels, this large, six bedroom property certainly merits internal inspection. Modern and well presented throughout, the flexible living space could be optimised to suit a new owner, but may be of particular interest to the larger family.

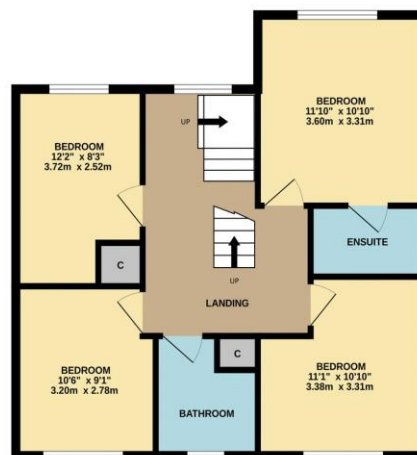
A fantastic 'Master' suit of large bedroom with robes, and full ensuite bathroom is available to the second floor, along with a further bedroom that could provide a perfect dressing room. The generous garden is another great feature, established and westerly facing, fully enclosed with lawn, decked entertaining area stocked borders.

Very briefly, the accommodation comprises an entrance hall, cloakroom/WC, bay-fronted lounge, dining room, modern upgraded kitchen/breakfast room and utility to the ground floor. The first floor brings four great bedrooms, one being ensuite, along with the separate family bathroom. The second floor is home to the 'Master' suite and further, sixth bedroom. A double width drive to the front allows off-road parking, approaching the integral garage.

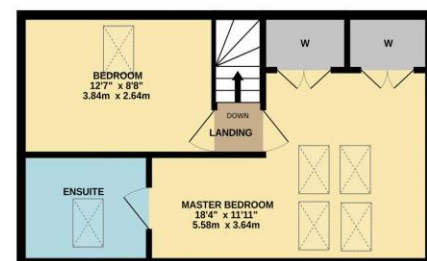
GROUND FLOOR



1ST FLOOR



2ND FLOOR



Whilst every attempt has been made to ensure the accuracy of the floorplan contained here, measurements of doors, windows, rooms and any other items are approximate and no responsibility is taken for any error, omission or mis-statement. This plan is for illustrative purposes only and should be used as such by any prospective purchaser. The services, systems and appliances shown have not been tested and no guarantee as to their operability or efficiency can be given.

Made with Metropix ©2024

“The Ingleby Barwick Experts”





Tenure: Freehold

Council Tax Band: F

EPC Rating: C



AGENTS NOTE: Every care has been taken with the preparation of these details, but they are for general guidance only. Measurements and dimensions are approximate, and any fixtures or fittings shown in photography does not infer that they are to be included within the sale. The agent has not tested any appliances or supplies and professional verification of these should be sought prior to purchase if required. These particulars do not constitute a contract or part of a contract.